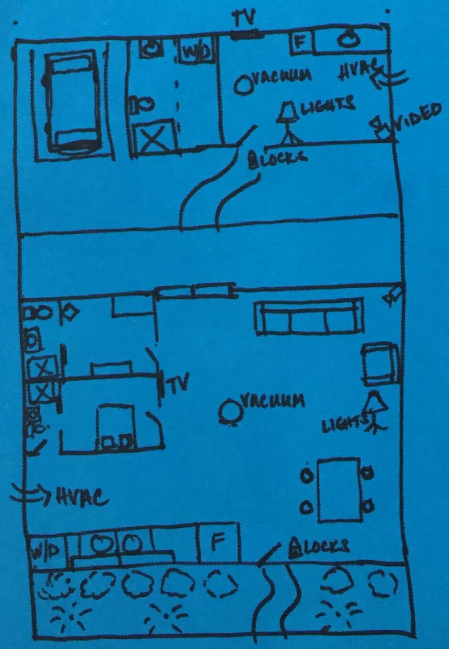
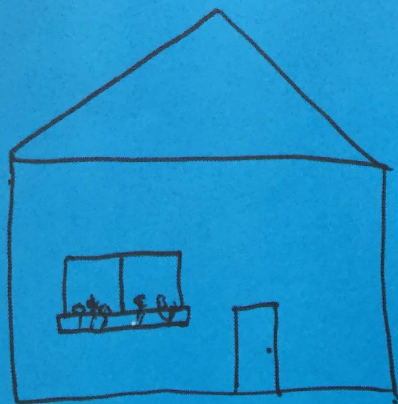


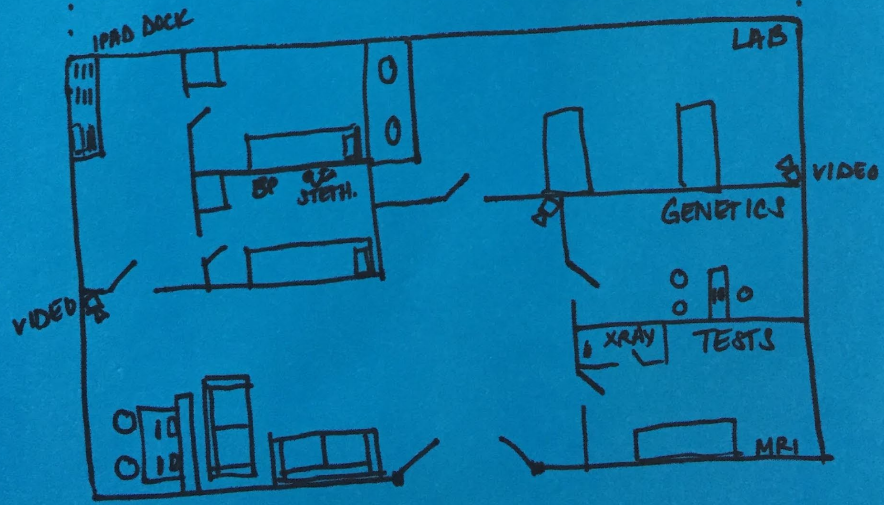
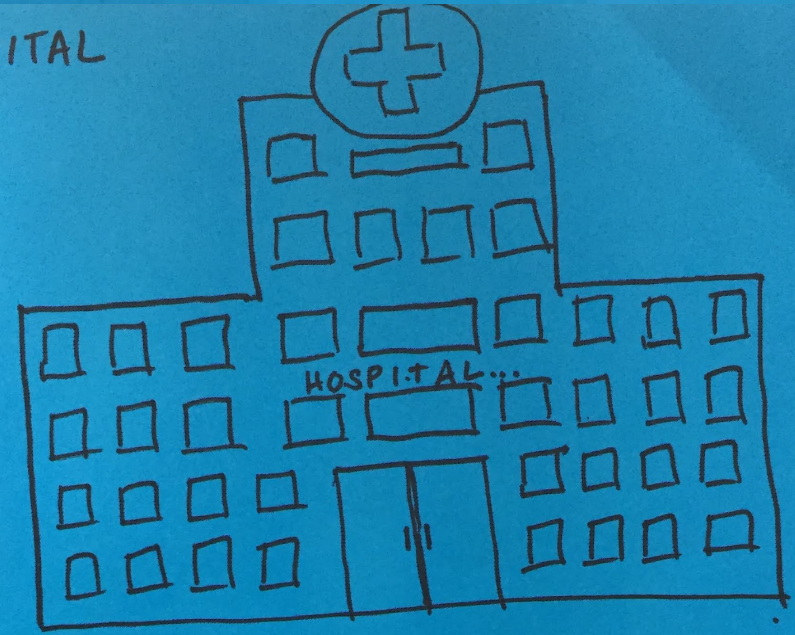
STRANGERS
WITH THINGS



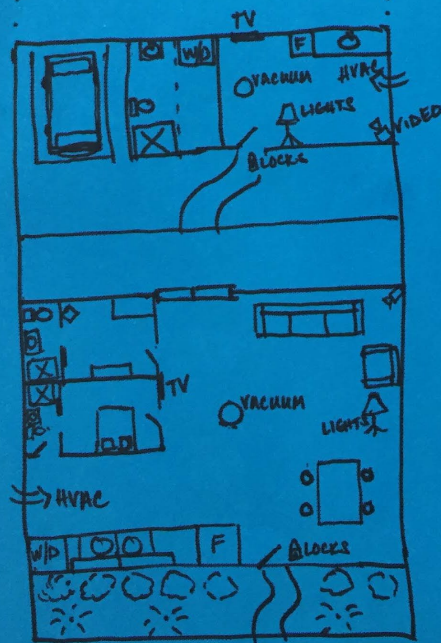
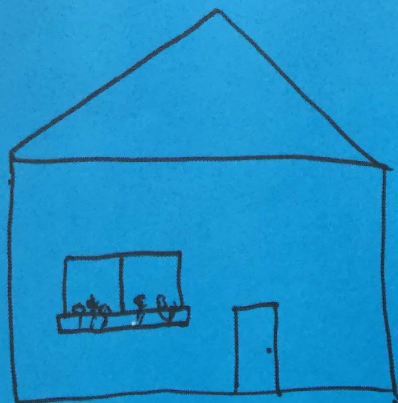
HOME



HOSPITAL



HOME



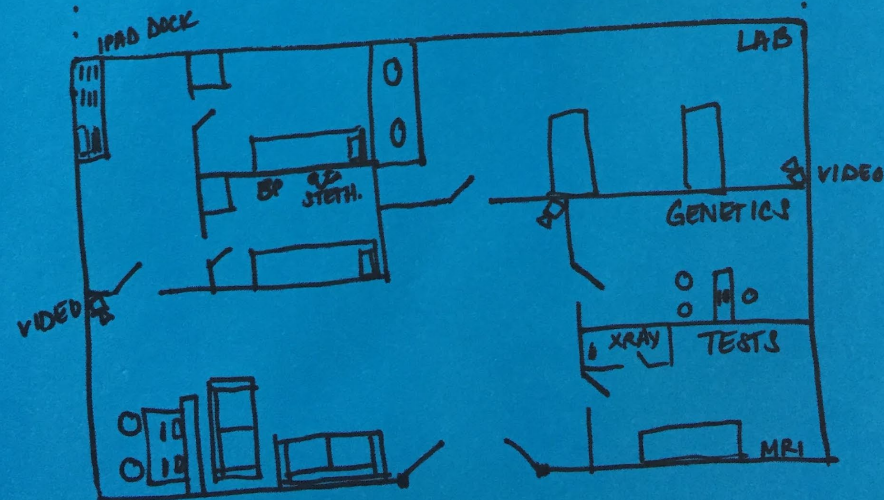
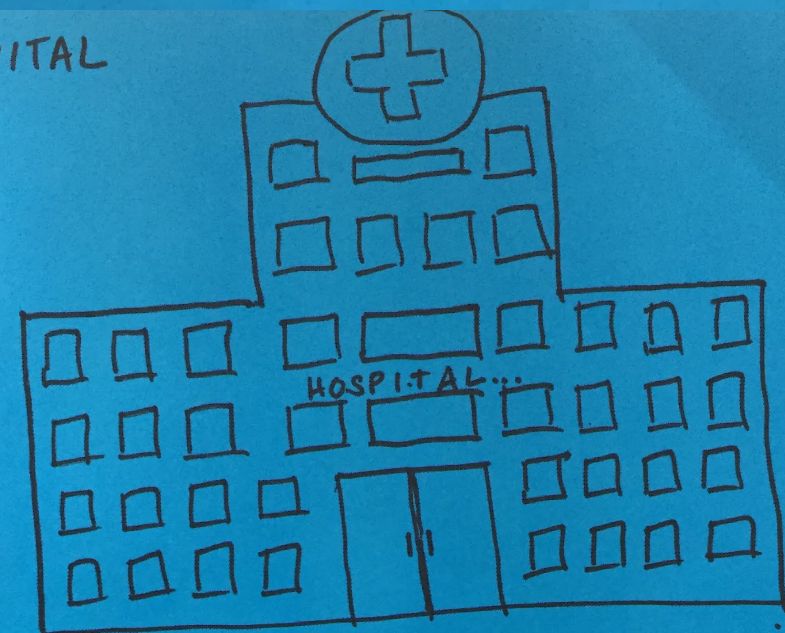
SCENARIO: HOME



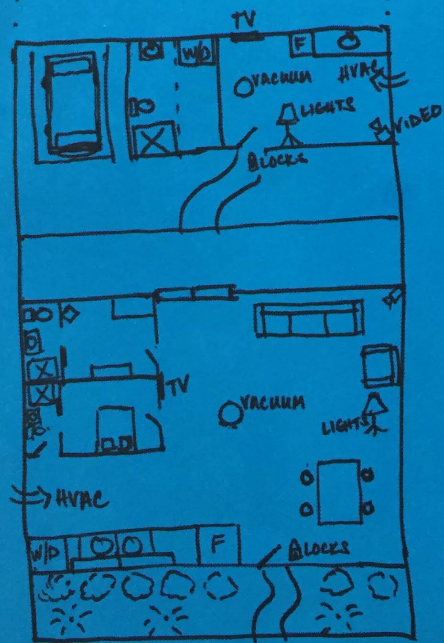
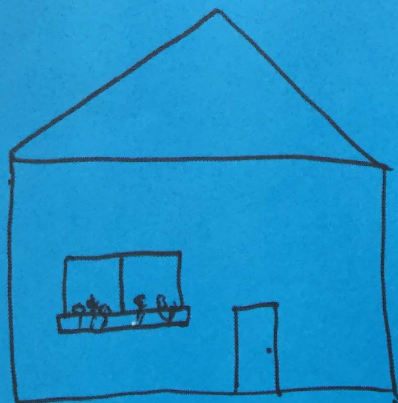
INTENDED USES:

- Ease of Use / Convenience
- Family communication
- Sustainable practice
- Safety
- Health & Well-being

HOSPITAL



HOME



SCENARIO: HOME

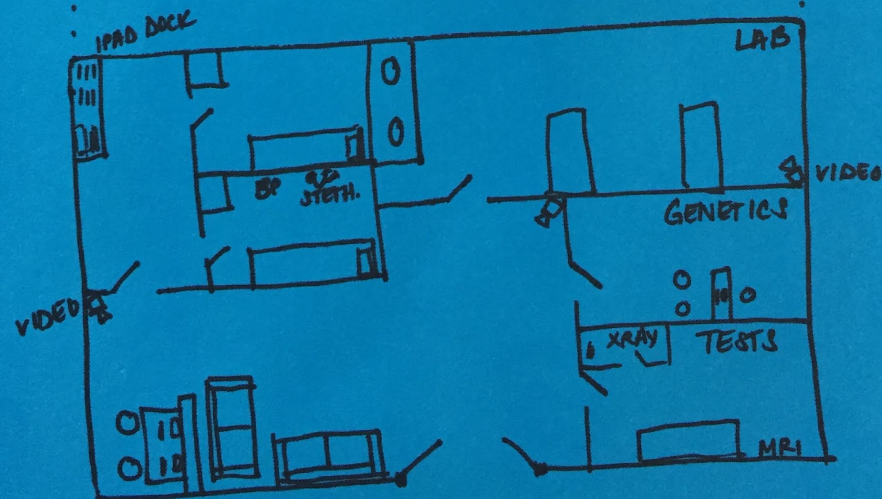
INTENDED USES:

- Ease of Use / Convenience
- Family communication
- Sustainable practice
- Safety
- Health & Well-being

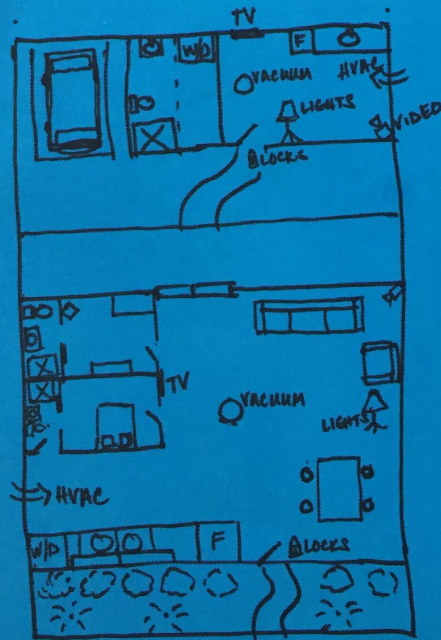
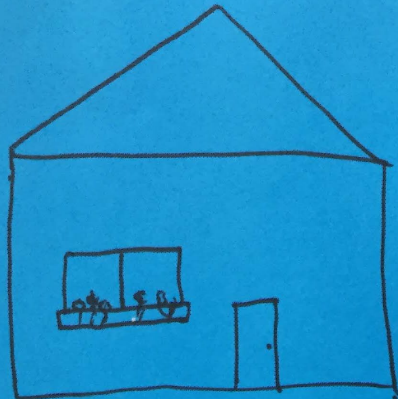
UNINTENDED USES:

- Break-in/Burglary
- Third parties knowing contents
- Surveillance
- Hacking
- Domestic abuse

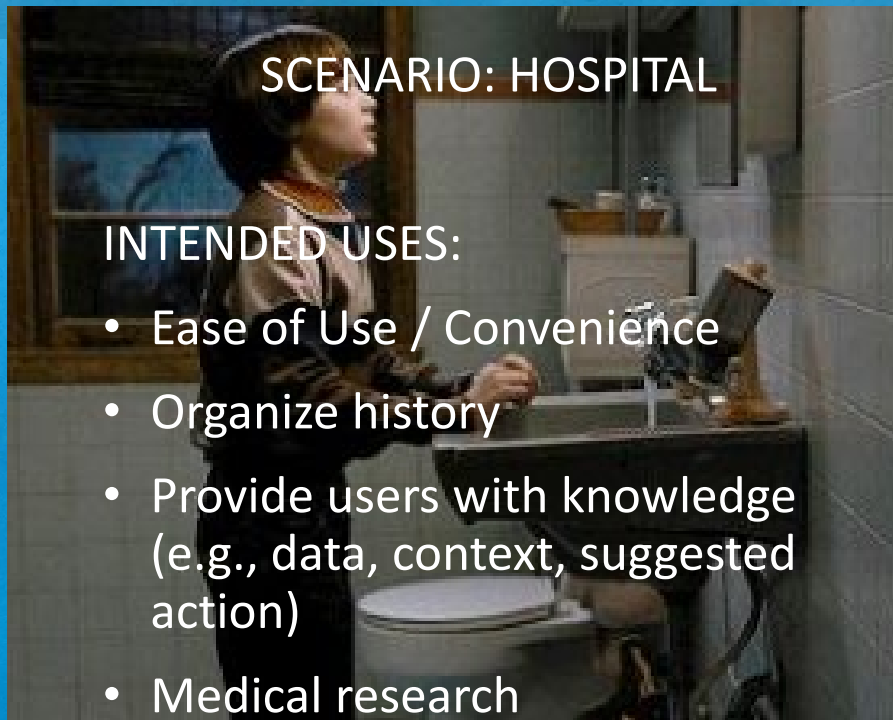
HOSPITAL



HOME



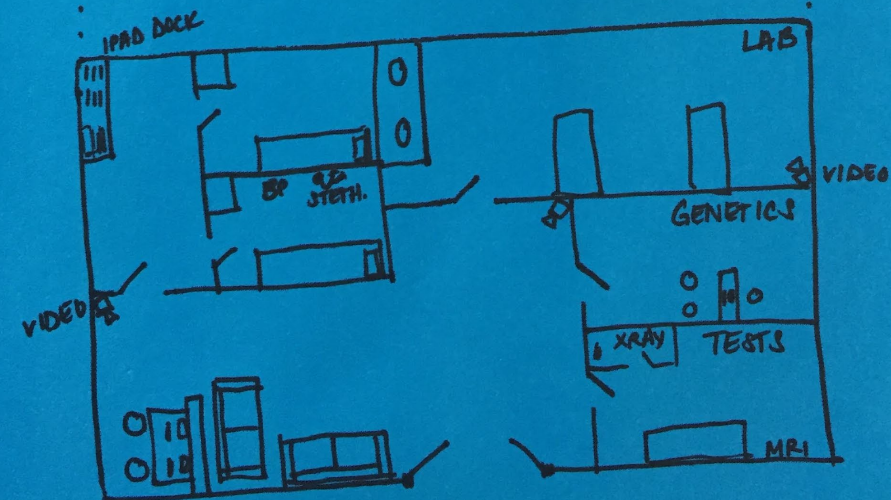
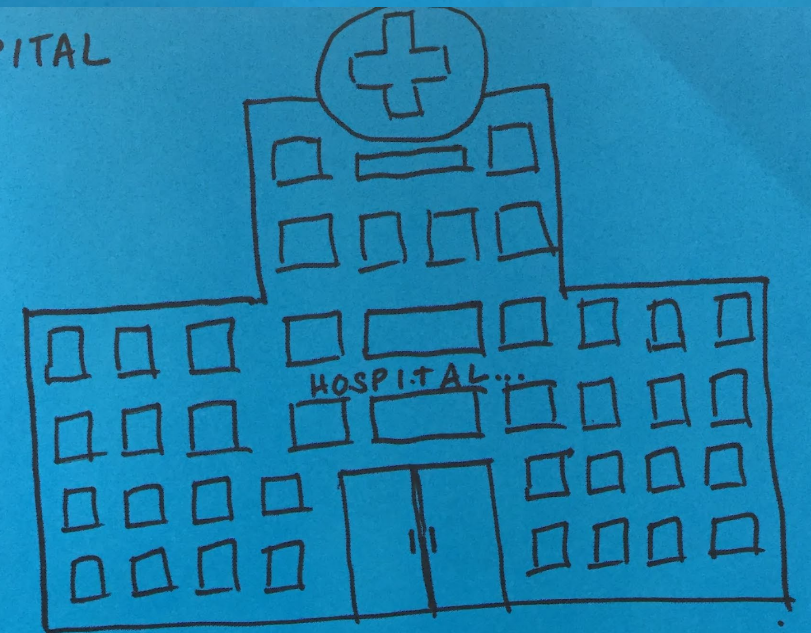
SCENARIO: HOSPITAL



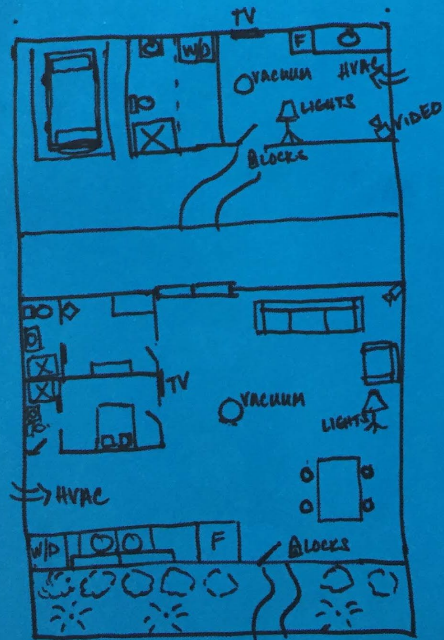
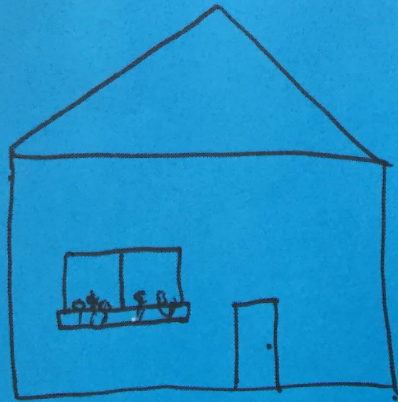
INTENDED USES:

- Ease of Use / Convenience
- Organize history
- Provide users with knowledge (e.g., data, context, suggested action)
- Medical research
- Self-awareness
- Monitoring Conditions

HOSPITAL



HOME



SCENARIO: HOSPITAL

INTENDED USES:

- Ease of Use / Convenience
- Organize history
- Provide users with knowledge (e.g., data, context, suggested action)
- Medical research
- Self-awareness
- Monitoring Conditions

UNINTENDED USES:

- Risk profiling (e.g., Insurance, Employers, Family Members, Government)
- Profiling -> Discrimination
- Personal Privacy Loss

HOSPITAL

